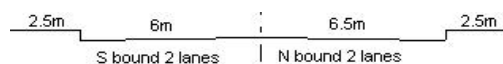
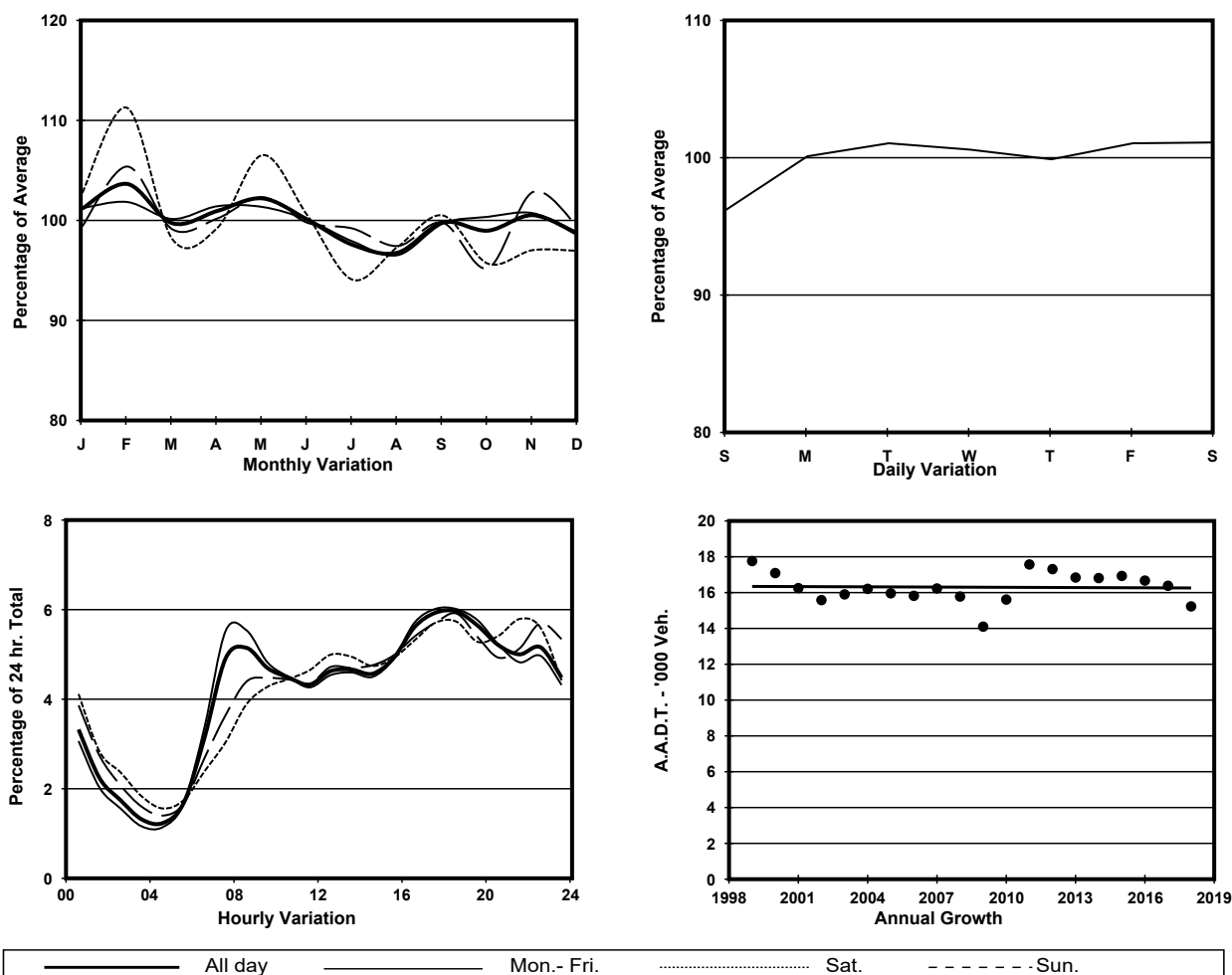


YEAR	2018	LINK	HIU KWONG ST (from SAU MING RD to HIP WO ST)
CORE STATION	3018		
ROAD NETWORK	MAJOR		
ROAD TYPE	DISTRICT DISTRIBUTOR		



1. TRAFFIC FLOW VARIATION AND GROWTH



2. TRAFFIC CHARACTERISTICS (BY DIRECTION)

Parameter	All - Day	Mon. - Fri.	Sat.	Sun.
SOUTH BOUND				
A.A.D.T.	7470	7490	7650	7340
R 12 / 24 - %	58.3	59.1	56.3	56.7
R 16 / 24 - %	81.2	82	79.1	79.9
AM Peak Hour	0700-0800	0700-0800	0900-1000	0900-1000
One-way flow at AM peak hour	330	380	320	310
T - % (AM)	-	-	-	-
PM Peak Hour	1800-1900	1800-1900	1800-1900	1800-1900
One-way flow at PM peak hour	480	490	470	450
T - % (PM)	-	-	-	-
Prop.of commercial vehicles - 16 hr.	-	-	-	-
NORTH BOUND				
A.A.D.T.	7760	7840	7750	7370
R 12 / 24 - %	61.3	62.7	58.7	56.7
R 16 / 24 - %	80.5	81.5	78.2	77.6
AM Peak Hour	0800-0900	0800-0900	0800-0900	0900-1000
One-way flow at AM peak hour	460	500	380	320
T - % (AM)	-	-	-	-
PM Peak Hour	1700-1800	1700-1800	1800-1900	1700-1800
One-way flow at PM peak hour	450	460	440	410
T - % (PM)	-	-	-	-
Prop.of commercial vehicles - 16 hr.	-	-	-	-

3. OTHER INFORMATION AND COMMENT